

AUTOMATIC MULTI COUPLER SYSTEMS

Besides mono couplers and manual multi couplers, EAS also designs and delivers complete automatic multi coupler systems. The pictures below show only a limited number of the possibilities these automatic multi couplers can offer you.

**ASK EAS FOR A SOLUTION
IF YOU NEED TO CONNECT
YOUR UTILITIES FAST,
RELIABLE AND CLEAN.**



Mold-mounted multi coupler plates.



A large automatic multi coupler mounted on the side of an injection molding machine platen with leak-proof connections for water, hydraulics and electrical connections. Hose guides are fitted to support the heavy hoses properly.



Pneumatic automatic coupler to connect electrical connectors and hydraulic lines in a special machine.



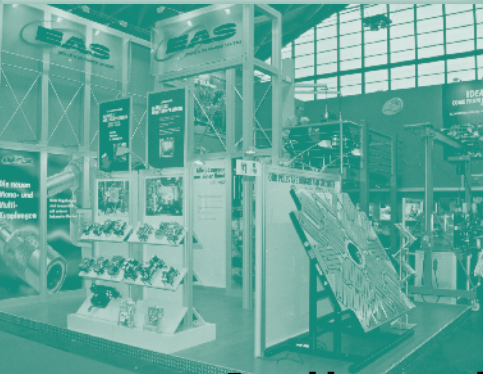
Horizontally mounted multi coupler to connect all utility connections from below.



Large automatic multi coupler mounted on both sides of the injection molding machine platen. Connection is performed by vertically loading the mold into these "swimming and floating" multi coupler plates.



Two large, size 37, couplers to connect cooling lines on a die casting machine. Also suitable in a hot and dirty environment.



You can find EAS at the following exhibitions:

- Fakuma in Friedrichshafen Germany from 18-22 October 2005, Stand 1219, Hall A1
- Europlast in Paris France from 14-18 November 2005, Hall 6, Stand C 144
- Equiplas in Barcelona Spain from 14-18 November 2005 at the Bereiker Booth
- Euromold in Frankfurt Germany from 30 November – 3 December 2005, Hall 8, Stand F157
- Eurasia in Istanbul, Turkey from 30 November – 5 December 2005
- Plast 06 in Milano, Italy from 14 – 18 February 2006

of course, you can also find a lot of information on our website: www.EASchangesystems.com

For addresses and other information please see our website:

www.EASchangesystems.com

MOULD & DIE CHANGE SYSTEMS

make **THE CHANGE** to **EAS**

MOULD & DIE CHANGE SYSTEMS

Periodical about QMC and QDC changing systems 2005 - 16

A COMPLETE RANGE OF MANUAL MULTI COUPLERS FOR A QUICK AND SIMPLE CONNECTION OF ALL YOUR UTILITIES

You will find EAS at several exhibitions in different countries this autumn and you are kindly invited to come and visit our booth and convince yourself that EAS has the best solutions for your QMC and QDC applications. EAS can be your turn-key project supplier for complete solutions but also with simple individual solutions such as manual multi couplers you can...

- Increase your machine productivity
- Reduce your labour cost
- Reduce your inventory
- Increase your flexibility
- Accelerate your response to orders and market requirements
- Improve the safety for your employees



**RESULTING IN A LOWER MANUFACTURING COST FOR YOU...
BECAUSE TIME IS STILL MONEY!**

EAS is now offering a complete product portfolio for manual multi couplers.

These fast and simple solutions are now available with different numbers and sizes of couplers for cooling or heating applications with open or closing mono couplers. The MCNF/MW series is fully interchangeable with other brands. We also offer manual multi couplers with leak-proof connections - the MMCF/M series. We have also introduced the MCCF/MH series of manual multi couplers for sequential injection molding, and the MCCF/MH series for other hydraulic leak-proof connections, which are also interchangeable with other brands.

**On page 4 you will find on which
exhibitions EAS is attending.**

Harm Nijzink

Harm Nijzink
President



Colofon

Editors:

EAS

New Page

Photography:

EAS

Studio van Leuven

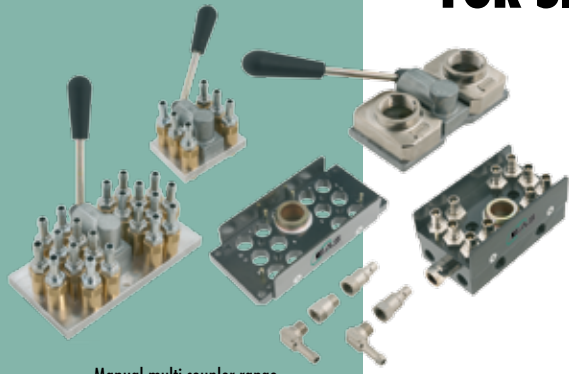
Graphic Design:

New Page



Our european application engineering team, Gerrit van Donkelaar, Ruud Looman and Jan-Willem Drost

MANUAL MULTI COUPLERS FOR SIMPLE AND QUICK WATER CONNECTIONS



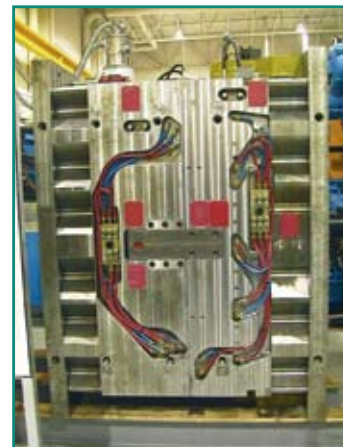
Manual multi coupler range.

Simple and quick, with no risk of making wrong connections, is the manual multi coupler range from EAS. Available with leak-proof connections, the MMCF/M series, as well as a complete range with open or closing connections, the MCNF/MW series. With manual multi couplers one can connect several water circuits fast and with no risk of making the wrong connections. A simple parking station is provided to “park” the machine-side manual multi coupler on the machine during a mold change. This is to prevent dirt entering the system or damage occurring by the coupler being dropped on the floor.

Several manual multi couplers on each mold half for a well known automotive supplier. Standard water couplers as well as special manual multi couplers for the electrical connections ensure trouble-free and fast connection of all utilities.



How things should not be done.



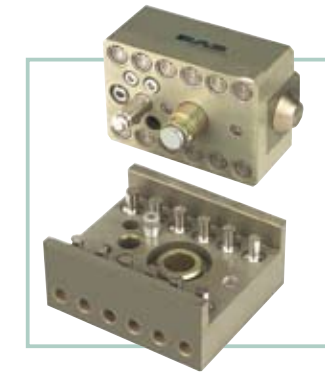
Well organized cooling circuits.

Our leak-proof series is available with 6 or 12 mono couplers as well as in two coupler sizes with several hose adaptors. The MCNF/MW series is available as standard with 6, 10, 12 or 20 mono couplers, as well as with 2 wide connections for large water hoses in and out, which are divided on the mold side to 12 mono couplers for 6 circuits. This is model MCNF/MW 0209-0006. On the mold side one can select either manual multi coupler plates with the required number of couplers and elbows, or one can also select manifolds with connections on the side.

If the following scenario might also be happening in your manufacturing plant, we strongly recommend that you think about doing things better with manual multi couplers! Wrong connections, bent and almost closed water hoses or tubes can cause a lot of quality issues in your production and will produce parts that need to be scrapped. Well organized cooling or heating circuits will improve the quality of your production and reduce scrap, quickly saving you time and money.



MCCF/MH series.



MCCF/MH series.

MANUAL MULTI COUPLERS FOR SIMPLE AND QUICK CONNECTION OF HYDRAULIC LINES

The MCCF/MH series is designed for quick and leak-proof connection of hydraulic lines, for example on sequential injection or hot runner systems. They are equipped with flush face couplers, which means that there will be no spillage of fluid when you connect and disconnect. The machine side is always equipped with 12 mono couplers, which are also marked, while on the mold side you can select between 4, 8 or 12 connections depending on how many hydraulic lines you have on a particular mold. Also for the MCCF/MH series there is a parking station available to “park” the multi coupler during a mold change. Another option is that the machine side can be equipped with a sensor in order to signal whether the manual multi coupler halves are connected or not. Max. pressure is 100 bar (1500 psi). These couplers are also fully interchangeable with other brands.

More manual multi couplers for hydraulic connections

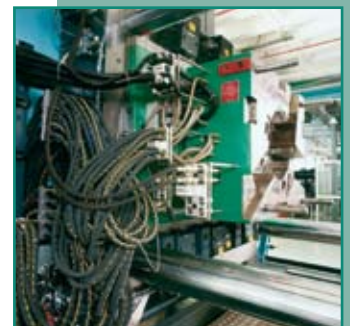
The MCCF/MH series is also designed with flush face couplers but is suitable for more flow and high cycling applications and for higher hydraulic pressure such as core pulling cylinders. Max. pressure is 160 bar (2300 psi). The MCCF/MH series is available with 4 or 6 mono couplers. A parking station is also available for these series to park the machine coupler during a mold change. The MCCF/MH series is also completely interchangeable with other brands.

Manual multi couplers for a combination of water, hydraulics and electricity and manual multi coupler for electrical connections only.

The leak-proof CQF/M and KQF/M series mono couplers offer the possibility to also combine water and/or air couplers with hydraulic couplers, as well as electrical connections.

Overall conclusion on manual multi couplers:

- Quick and trouble-free connections of fluids, either with open, closing or leak-proof mono couplers.
- Parking stations available to park the machine side during a mold change
- Mono coupler position is numbered for easy connections
- Combinations of fluids and/or electrical connections are possible as specials
- The EAS couplers are interchangeable with other brands.
- Fast return on investment



Manual multi couplers on a 1300 ton injection molding machine.