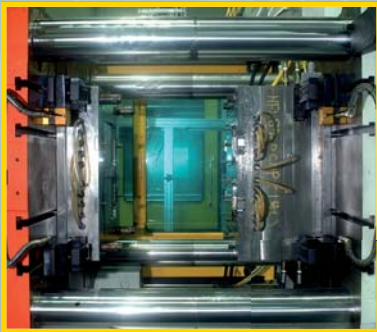
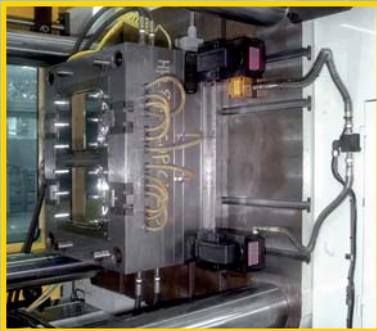


SINGLE ACTING HYDRAULIC QUICK MOULD CLAMPING ELY ROCKER CLAMPS



Quick Mould Clamping Solutions. (QMC)

In today's manufacturing environment Just-in-Time(JIT), SMED (Single Minute Exchange of Dies) and Lean Manufacturing production methods are globally applied., resulting in the need for frequent mould & die changes in the injection moulding , die casting and stamping industries. For more than 25 years EAS has supplied QMC solutions to help reduce unproductive time occurring during a mould change.

Our double acting MOD cylinders are used on hundreds of machines around the world. In order to offer more hydraulic clamping solutions without electronic sensors, EAS now introduces single acting cylinders:

Type ELY Rocker Clamps. These clamping cylinders can be operated by air hydraulic pump units from EAS.

For safety reasons we operate the 4 cylinders per plate with two hydraulic circuits on the movable and the fixed side of the machine. The EAS pumps are equipped with pressure switches and if the set pressure is reached the pump switches off. If the pressure then drops below the set pressure the air operated hydraulic pump automatically switches on until the set pressure is reached again.

Furthermore, the machine will stop if the hydraulic pressure drops below the defined safety pressure. In case of power failure the cylinders will stay under pressure and the clamping function remains in operation. Each cylinder can also be equipped with a safety check valve.



**IDEAS
COME FROM EAS**

UK

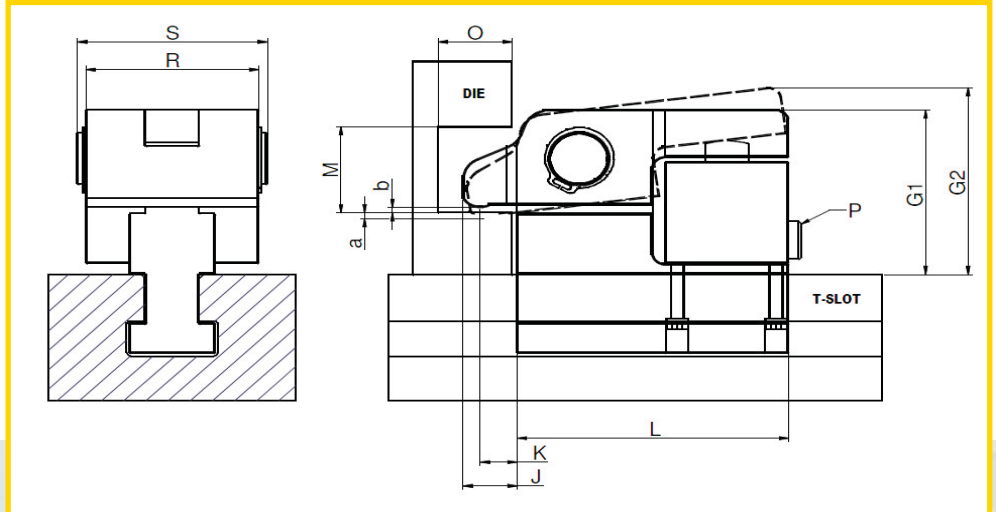
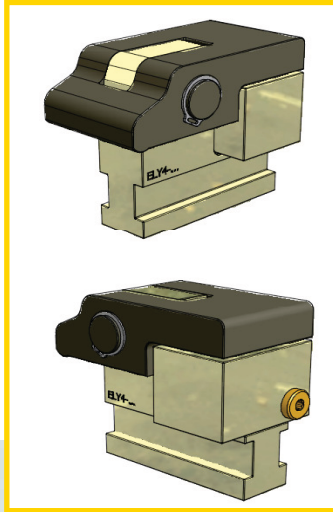
Rocker Clamp series ELY

Single acting and max 350 bar working pressure.

Capacity: 20, 40, 60 100, 160 and 250 kN

Temperature range :0C till 200C

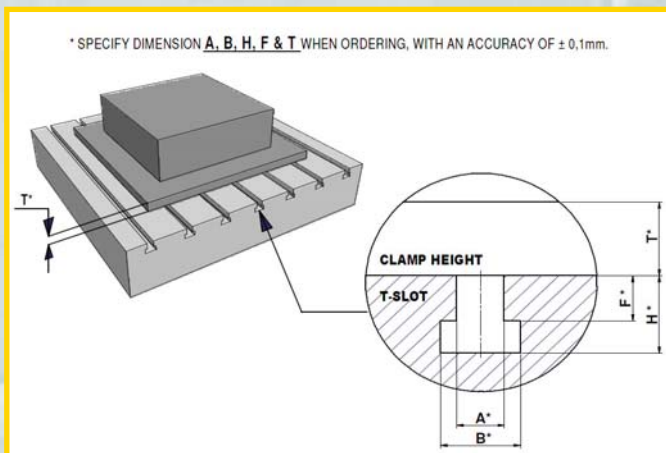
PRODUCT INFORMATION



EAS TYPE	Clamping force (ton)	Operating pressure (bar)	Cylinder weight (kg)	Oil volume (cm ³)	Dimensions in mm													
					A* (max. width)	T* (min. height)	G1	G2	R	S	J	K	L	M	O	P	a	b
ELY 20	2	350	4.0	3.0	22	20	T+38	T+48	55	62	20	15	95	40	30	G1/4"	2	3
ELY 40	4	350	4.9	5.6	22	30	T+47,5	T+58	70	77	22	15	110	40	30	G1/4"	2	3
ELY 60	6	350	7.6	9.0	22	40	T+58	T+68	80	87	22	15	130	40	30	G1/4"	2	3
ELY 100	10	350	13.7	14.5	28	50	T+73	T+83	90	97	25	18	160	50	40	G1/4"	2	3
ELY 160	16	350	21.8	22.6	28	50	T+93	T+103	110	120	25	18	193	50	40	G1/4"	2	3
ELY 250	25	350	40.2	35.3	36	50	T+118	T+128	130	140	30	22	243	70	40	G1/4"	2	3

Temperature range with standard seals -5 till 60°C Please specify dimensions of T slot A,B,C and D in mm as well as H dimension of the tool

HOW TO ORDER



ORDERING CODE:

ELY - X - A - B - F - H - T

- X** = Clamping Force in Tons x 10, being 20, 40, 60, 100, 160 or 250.
- A** = T-Slot width. Measure with accuracy of +/- 0,1 mm. Maximal width as described in the table above.
- B** = T-Slot width. Measure with accuracy of +/- 0,1 mm.
- F** = T-Slot height. Measure with accuracy of +/- 0,1 mm.
- H** = T-Slot height. Measure with accuracy of +/- 0,1 mm.
- T** = Clamp Height of the die. Minimal thickness as described in the table above. Measure with accuracy of +/- 0,1 mm.

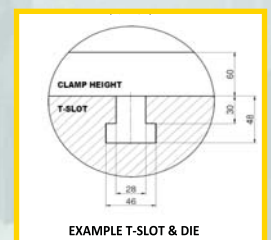
FOR EXAMPLE :

ELY100 - 28 - 46 - 30 - 48 - 60

ELY clamp with 10 tons of clamping pressure.

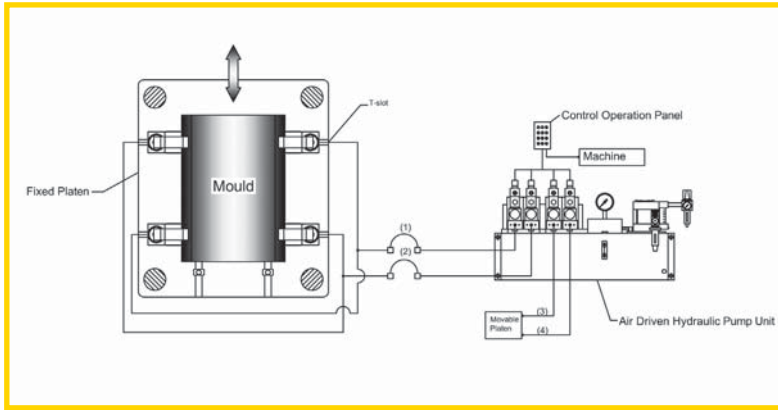
Suitable for a backplate thickness of 60 (+/- 0,1) mm.

Fits in T-slot as shown.



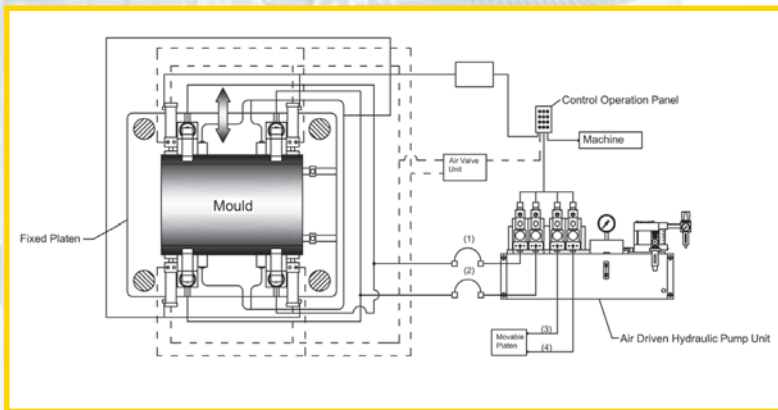
Flange mounted ELY cylinders as well as air moved Ely cylinders are available on request.

System setup



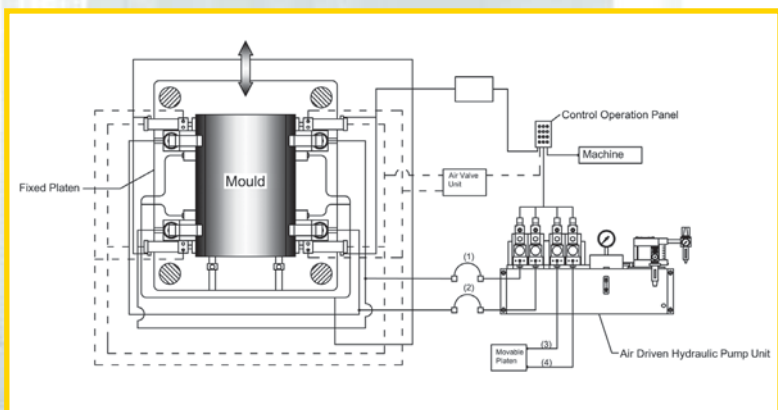
Platen with T-slot

Vertical mould loading with T slot mounted rocker clamps ELY. With split hydraulic circuit on each plate (1) and (2).



Clamps moved automatically by pneumatic (hydraulic) cylinder

Vertical loading with T slot guided rocker clamp with pneumatic traveling cylinder and with air operated check valves. Used for larger sizes of non standardized moulds.



Clamps moved automatically by pneumatic cylinder

Vertical mould loading with T slot guided rocker clamp with pneumatic traveling cylinder and with air operated check valves. With split hydraulic circuits on each plate.

Other solutions



EAS offers a wide range of hydraulic clamps with, for example, self-locking and sensor features, for vertical as well as horizontal mould changes, as well as magnetic mould clamping systems. Apart from clamping solutions, EAS also offers ejector couplers, mono and multi couplers for simple and fast connection to all utility connections, mould change tables and carriages as well as inspection units, mould rotate units and mould & die storage systems. EAS can supply all your complete QMC, QDC or SMED solutions from one source.

EAS can provide you with the following products:

- Clamping systems for vertical and horizontal presses
 - Hydraulic adaptive solutions
 - Hydraulic integrated solutions
 - Mechanical adaptive systems
 - Magnetic adaptive solutions
- Ejector couplers
- Mono-, manual multi- and automatic multi couplers
- Pre rollers
- Die-lifters
- Mould change solutions
 - Manual mould change cars
 - Electric driven mould change cars
 - Rail guided mould change cars
 - Mould change tables
- Air floating cars
- Pre heating stations
- Mould inspection units
- Mould tilting units
- Mould storage racks

and the following services:

Installation services, project management and return of investment (R.O.I) calculations.

Complete SMED and JIT solutions from EASchangesystems.

We help you reduce manufacturing costs and increase operating profits

Europe/The Netherlands

EAS Europe B.V.
De Hooge Hoek 19A
3927 GG Renswoude
The Netherlands
kvk: 30173173
Tel.: +31 318 477 010
Fax: +31 318 477 020
E-mail: info@easchangesystems.com

China

Suzhou EAS Mold &
Die Change Systems Ltd. Co.
No.1188 Pangjin Road Wujiang City,
215200, PR China
Tel.: +86-(0)512-63093091
Fax: +86-(0)512-63093090
E-mail: sales-china@easchangesystems.com

www.EASchangesystems.com

info@easchangesystems.com

